



BROCHURE

Electronic Inclinometer DanEI-300

Daniamant design and manufacture all of our products in line with the relevant worldwide approvals, technical specifications, current legislation and International directives.

Our mission is to achieve World class performance through partnerships with our suppliers, customers and employees, providing products and services that enhance the safety and security of our customers.

Daniamant products cover 12 key areas:

- Lifejacket Lights
- Liferaft Lights
- Lifebuoy Lights
- Intrinsically Safe Lights
 - Special Lights
 - LED Flares
- Forward Looking Sonars (FLS)
- Bridge Navigational Watch Alarm System (BNWAS)
 - Salinometers
 - Oil Level Alarm
- Electronic Inclinometer
- Agency for a range of world-renowned safety product brands (supplied to the Danish market)

Further Information

For further information on our products, please see our website: www.daniamant.com

Function

The DanEI-300 Electronic Inclinometer is an advanced heel and pitch measuring device which is not sensitive to horizontal and vertical accelerations. This will provide information to a better understanding of the ship's movement and steering behavior, supervision of trim, cargo status and stability status.

The Electronic Inclinometer measures and displays:

- Pitch Angle
- Heel Angle
- Roll Period
- Amplitude (port & starboard)
- Additional trend plots display heel angle for the latest 3 minutes and roll amplitude for the latest 30 minutes.

Typical Use

On rolling vessels the usual bubble or pendulum inclinometers indicate values which are too high. This margin error can be up to 30% of the measured value. As the DanEI-300 will not be affected by these accelerations it shows the true inclination and roll period. Furthermore, the DanEI-300 can contribute to reduction of fuel consumption and improvement of safety.

Mains Supply

24V DC Power Supply

Regulations

BSH type approved according to:

- IMO Performance Standards MSC.363(92) (functional compliance)
- IEC 60945 (Environmental conditions)
- IEC 61162- 1, -2, -450 (Serial and network interfaces)
- IEC 62288 (Presentation of information)



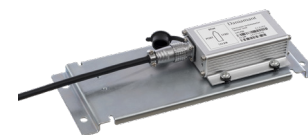
Panel mounting model



Bracket mounting model



Sensor Unit



Sensor Unit with mounting plate

Daniamant A/S

Industrivej 24C
3550 Slangerup
Denmark

Tel +45 47 37 38 00
Fax +45 47 37 38 09
info@daniamant.com

Daniamant Ltd

Unit 3, The Admiral Park
Airport Service Road
Portsmouth, PO3 5RQ
United Kingdom

Tel +44 23 92 67 51 00
Fax +44 23 92 67 51 01
sales@daniamant.com

Delivery

Delivery of the DanEI-300 will be a complete package with all necessary components and documentation to ease the installation and start-up, including:

- Display unit configured as MASTER
- Sensor unit with mounting plate
- Frame for console mounting
- Brackets and knobs for desktop or wall mounting
- 4-pin shielded power supply cable (3m)
- 6-pin shielded serial interface cable (3m)
- Sensor cable (3m)
- Grounding cable (0,5m)
- RJ45 cable gland (Note: Ethernet cable is not supplied)
- Mounting screws
- Quick guide for installation, operation and service manual

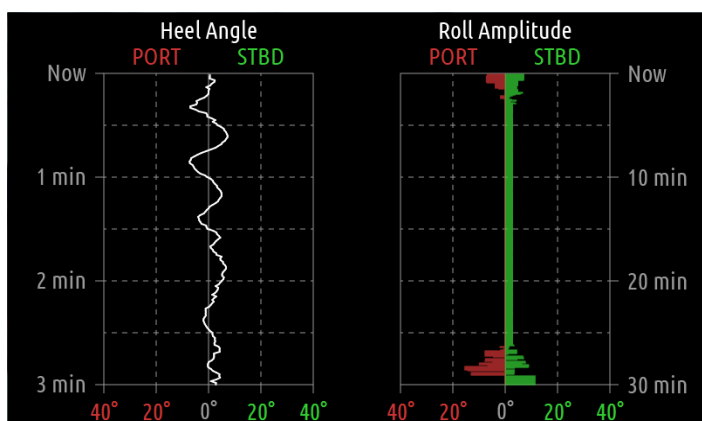
Cable Connections

- 24V DC Power Supply
- Sensor Data
- HRM, ALC, ALF, HBT to VDR / INS
- ACN, HBT from INS
- NMEA

Dimensions

Display Unit: 240 x 160 x 48 mm / 1,5 kg

Sensor Unit with mounting plate: 233 x 90 x 37 mm / 0,2 kg



Monitor image of 3 min trend plot of heel angle (left) and 30 min of roll amplitudes (right).

