



## DANIAMANT L7A lifejacket light

### Installation and Maintenance Instructions



#### Description

The L7A is a lifejacket light which is activated when a sensor is immersed in water.

The light is designed to be fitted by the lifejacket manufacturer only.

#### Daniamant Limited

Unit 3, The Admiral Park, Airport Service Road, Portsmouth, UK PO3 5RQ

Telephone: +44 (0)23 9267 5100 Facsimile: +44 (0) 23 9267 5101

[www.daniamant.com](http://www.daniamant.com)

77-365-001 Iss 5 (C6267)



## Installation

The L7A lifejacket light is for use on solid foam, easy to don lifejackets only. The lamp housing may be fitted only by the lifejacket manufacturer, as specialised tools are required; the light assembly may be changed by anybody.

To fit the lamp housing, refer to the diagram opposite.

Using a sharp implement, cut a hole 40 mm diameter by 85 mm deep in an upper corner of the lifejacket in a position to ensure maximum visibility of the light when in use, ensuring that there is sufficient foam wall thickness on the thinnest side to maintain its strength. Firmly press the housing assembly into the hole, ensuring that the teeth grip the material around the hole to prevent it being pulled from under the housing.

To fit the lamp assembly:

1. Clip the light assembly into the housing, orientating the lead position into one of the clearance grooves in the housing.
2. Route the sensor lead to the bottom of the lifejacket to ensure that the sensor is under water when in use, attaching the lead at several points to ensure that it will be secure in use.

## Operation

The L7A light is switched on automatically when the sensor is immersed in water; no user action is required.

## Maintenance

### Routine service

L7A units are maintenance free, but the following checks should be made annually:

1. Inspect light for signs of damage or corrosion, if damage or corrosion visible, the unit is to be replaced.
2. Test the light by immersing the sensor in water. The light must flash. Remove the sensor from the water and dry it. The light must stop flashing.

**Ensure that the sensor is in the “closed” position, as shown below.**

## Life

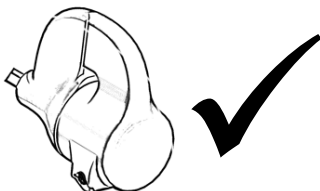
The life of the L7A batteries is five years from the date of manufacture; the expiry date is shown on the label affixed to the L7A. At the expiry date marked on the light, the removable light unit must be replaced. Replacement lights are available from the manufacturer of the lifejacket.

1. Carefully detach the light unit by unclipping it from the permanent housing.
2. Free the sensor lead from its attachment points on the lifejacket.
3. Remove the light unit and dispose of it correctly
4. Fit the replacement light assembly as detailed under **Installation**.

## Switching

IMO regulations require that a flashing light can be switched off. Accordingly, for approval purposes the light may be extinguished by rotating the two halves of the sensor body, as shown below.

**WARNING: the light will not operate when the sensor is “open”; operation requires that the sensor is “closed” AND immersed in water. Other than for testing, the sensor must always be in the “closed” position. Do not tamper with the sensor.**



**L7A ON**  
**“Closed”**



**L7A OFF**  
**“Open”**

## Safety

L7A lights contain Lithium cells. These must be handled correctly:

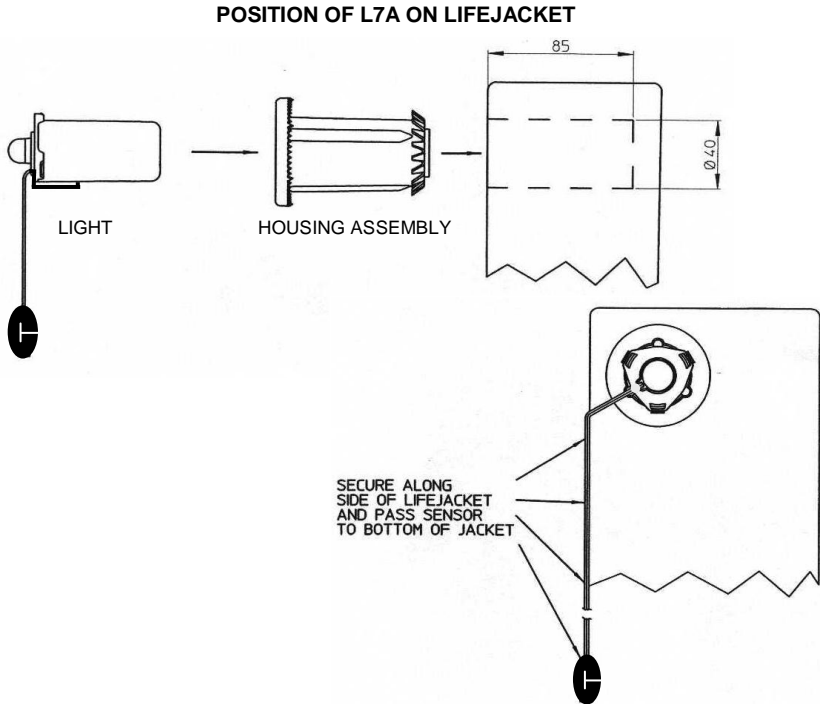
- Do not dismantle battery pack
- Do not make any external electrical connection
- Do not recharge
- Do not incinerate

Store between  $-30^{\circ}\text{C}$  and  $+65^{\circ}\text{C}$

## Health and Safety information

Daniamant lithium-powered marine safety light systems have a design life of 5 years. The batteries are hermetically sealed pressurised primary Lithium/Manganese cells, and as supplied are electrically protected by a solid state device, and are environmentally protected by a moulded plastic housing. In this condition the units pose no definable hazard to health.

Information on the composition and behaviour of these products is contained in the Product Safety Data Sheet, available from our website ([www.daniamant.com](http://www.daniamant.com)) or on request.



**SENSOR MUST BE POSITIONED SO AS TO BE IMMersed IN WATER DURING USE**

## Product Disposal Instructions

The symbol shown here and on the product means that the product is classed as Electrical or Electronic Equipment and should not be disposed with other household or commercial waste at the end of its working life.

The Waste Electrical and Electronic Equipment Regulations 2006 (the WEEE Regulations) transpose the WEEE Directive (2002/96/EC) into UK law. They have been put into place to ensure that producers fund the cost of collection, treatment, recovery and environmentally sound disposal of WEEE, thereby minimising the impact of such waste on the environment and reducing the amount of waste going to landfill.



To ensure compliance with the WEEE Regulations, the Survivor Location Light should be returned to Daniamant or deposited in your nearest WEEE Designated Collection Facility, operated by your Local Authority. From 2010, it will also be a requirement to recycle batteries and, therefore, it is recommended that, from 1 February 2010, all batteries are deposited at your nearest battery collection point. Please contact your Local Authority or visit the Daniamant website at [www.daniamant.com](http://www.daniamant.com) for contact details.

Further copies of this installation and maintenance instructions are available to download from our website [www.daniamant.com](http://www.daniamant.com)

A copy of these instructions must be held with the ships/owners training manual.