



- ▶ Suitable for maritime and energy applications
- ▶ Approved according to IEC 60945
- ▶ Compact and robust design
- ▶ VoIP based
- ▶ Adaptable and cost efficient in all configurations
- ▶ Dual power supply according to IMO regulations
- ▶ Easy configuration

**PHONTECH**

ICS 6200 COMMUNICATION SYSTEM



[www.jotron.com](http://www.jotron.com)



# ICS 6200 COMMUNICATION SYSTEM

The digital ICS 6200 Integrated Communication System meets all aspects of internal / external communications and information exchange onboard vessels, on offshore installations and to / from onshore operation centres.

The system's flexible configuration is a cost effective solution for intercom, telephone, public address, alarm and loudhailing. Its modern architecture allows network connection including cascading, remote service and interface to / from other IP based systems and components.

The ICS 6200 is compatible with all existing intercom stations and offers a unique combination of analogue, digital and IP based communication terminals.

Call logging is available by the ICS 6202 Billing Unit, using PIN and extension registration.



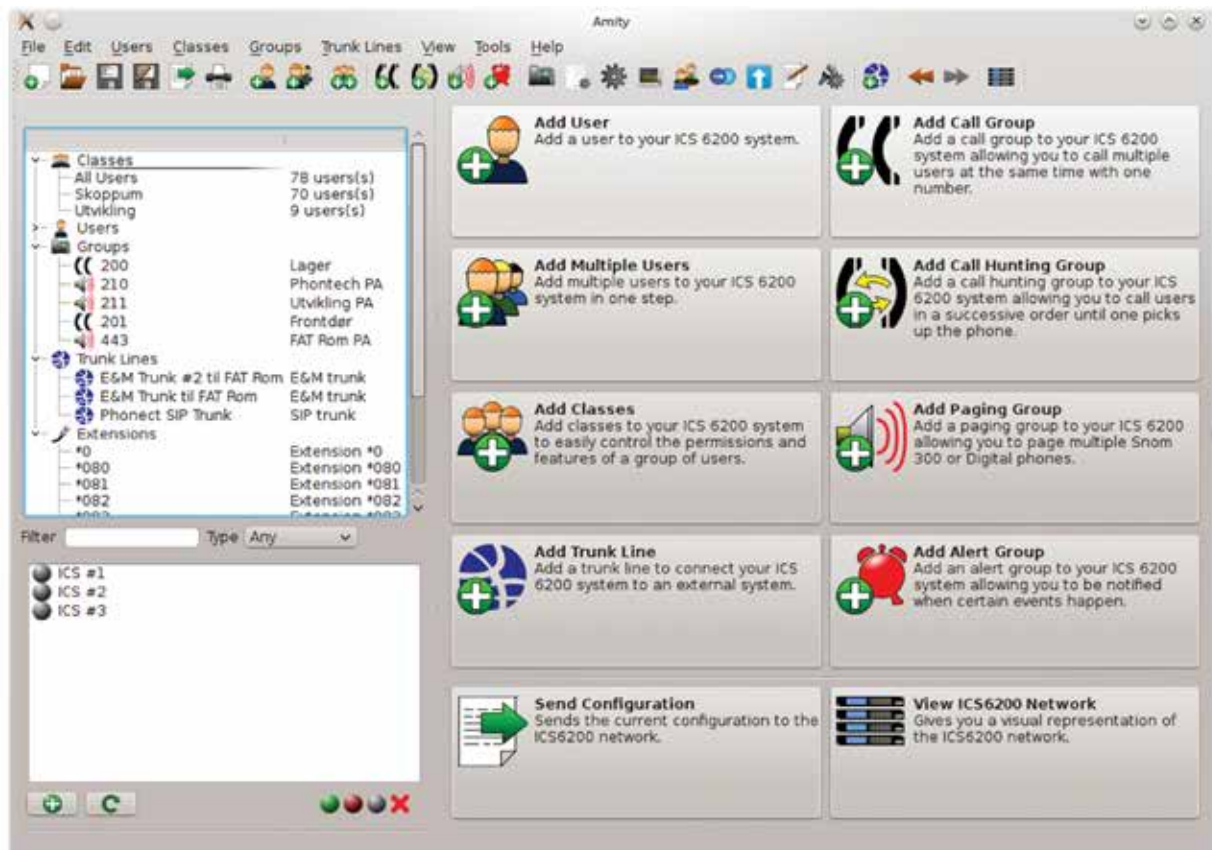
## Hardware

- Compact 1U 19 inch metal enclosure
- VoIP, intercom, PA and POTS interoperability
- Flexible line card selection
- Scalable and distributable
- Modular with standardized interfaces
- Upgradeable functionality
- Compact enclosure, high line density possible
- Dual power supply
- Energy efficient
- Fault tolerant interconnection
- Quick and easy field replacement

All lines and Ethernet connectors are patched from the front of the unit. Easy access to parameters and configuration using the keypad and display on the front of the unit. Power supply connectors are located at the back of the unit.

## Software

- Automatic discovery of all ICS 6200 units in your system, complete with all add-on modules
- Hot swap replacement
- User friendly interface, including wizards to help first time users perform specific tasks and bulk edit operations for experienced users
- Simple grouping of users in different classes - for instance Officers and Crew
- Intuitive access control for resources in the system - for instance restrict access to paging groups and resources to Officers only



Easy to use and intuitive GUI based software. Configuring call destinations.



# ► ICS 6200 COMMUNICATION SYSTEM

**Available cabinet sizes:**  
9U / 16U / 25U / 34U

**Interfaces:**

- VoIP (SIP server/client)
- Trunk lines (FXO)
- Analogue (FXS)
- Digital (UpN)
- E&M 2-wire (PA, UHF, VHF, VF)



**Some available telephones/terminals/intercom units :**



Snom 710 IP telephone



6110 MkII Indoor unit



5111 Watertight telephone



5113 / 5123 / 6113 / 6123 Telephone



6111 W.P. unit w/handset



6124 W.P. unit



6112 W.P. unit without handset



6035 Headset

ICS 6200 is type approved according to RMRS and DNV:



Gigaset DA-710



RESISTEL EX Telephone Fernsig

**Agent/Distributor:**

Jotron AS reserves the right to change the design and/or specifications at any time without prior notice. Reservations are also taken towards any general errors that may occur.

v.G

[www.jotron.com](http://www.jotron.com)

## CONTACT INFORMATION

**Jotron AS**  
P.O. Box 54  
3281 Tjodalving  
Norway  
Tel: +47 33 13 97 00  
Fax: +47 33 12 67 80  
sales@jotron.com

**Jotron UK Ltd.**  
Crosland Park  
Cramlington  
NE23 1LA  
United Kingdom  
Tel: +44 (0) 1670 712000  
Fax: +44 (0) 1670 590265  
sales@jotron.com

**Jotron Asia Pte. Ltd.**  
19 Loyang Way  
Changi Logistics Centre  
Rear Office Block 04-26  
Singapore 508724  
Tel: +65 65426350  
Fax: +65 65429415  
sales@jotron.com

**Jotron USA, Inc.**  
10645 Richmond Avenue, Suite 170  
Houston, TX 77042  
USA  
Tel: +1 713 268 1061  
Fax: +1 713 268 1062  
sales@jotron.com