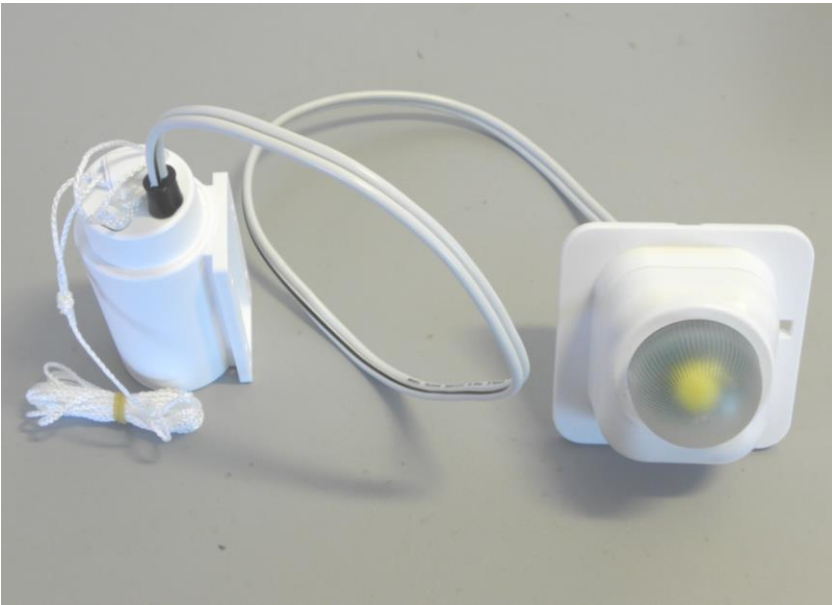


Rescue Dan R.EXT1 raft light

Installation and Maintenance Instructions



Description

The Rescue Dan R.EXT1 is a flashing raft light which is activated manually.

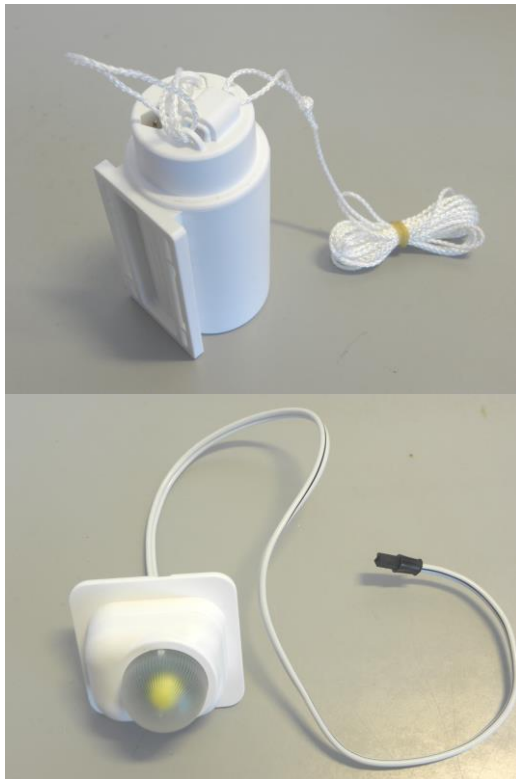
Daniamant ApS

Industrivej 24C
DK-3550, Slangerup, Denmark
Tel: +45 47 37 38 00 Fax: +45 47 37 38 09
Email: orders@daniamant.com
www.daniamant.com



Installation

Pull the activation pin out of the socket and the light will illuminate. In case of an inflatable life raft the lights is provided with a cord attached to the pin, so the pin automatically during inflation will be pulled away from the light. The light can be turned off by using the spare pin attached to the light.



Maintenance

Routine service

1. The power source is maintenance free lithium battery with a shelf life of min. 5 years.

But the following checks must be made annually:

- Inspect the battery for signs of damage or corrosion.
- Activate the battery

2. The battery pack is separate from the lamp and shall be replaced after 5 years from production date.

3. The light unit (lamp) must be replaced together with the battery and the latest after 6 years from production date.

4. The expiry (replacement) date is indicated on the label by month and year.

Replacement

The Rescue Dan R.EXT1 raft light has a storage life of 5 years and must be replaced by the date shown on the label.

Health and safety information

Rescue Dan R.EXT1 lights contain Lithium cells. These must be handled correctly:

- Do not dismantle the light assembly
- Do not make any external electrical connection other than connecting lamp to battery.
- Do not recharge
- Do not incinerate
- Store between -30°C and +65°C

The Batteries are hermetically sealed pressurised primary Lithium/Manganese cells, and as supplied are electrically protected by a solid state device, and are environmentally protected by a moulded plastic housing. In this condition the units pose no definable hazard to health.

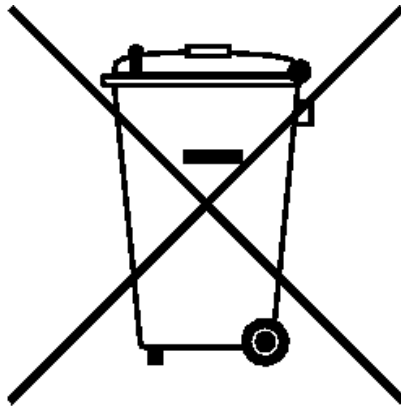
Information on the composition and behaviour of these products is contained in the Product Safety Data Sheet, available from our website (www.daniamant.com) or on request.

Disposal

Dispose of used and expired lights in accordance with local regulations. This could be done through an approved environmental disposal agent.

All Daniamant product disposal instructions are available within the user instruction leaflet provided with the product, or alternatively, available for download on this website.

Daniamant's Survivor Location Lights contain batteries as well as electrical and electronic components, and must therefore be segregated from the domestic waste stream and recycled. Disposing of this product correctly will help save valuable resources and prevent any potential negative effects on human health and the environment, which could otherwise arise from inappropriate waste handling. Daniamant's lights are marked with the symbol below which conveys that this waste must be treated separately from household waste.



To ensure compliance with the WEEE and Battery Regulations, the Survivor Location Lights placed on the market in the UK or Denmark should be returned to Daniamant in the UK or Denmark, or deposited in your nearest WEEE Designated Collection Facility, operated by your Local Authority.

Further copies of this installation and maintenance instructions are available to download from our website www.daniamant.com

A copy of these instructions must be held with the ships/owners training manual.